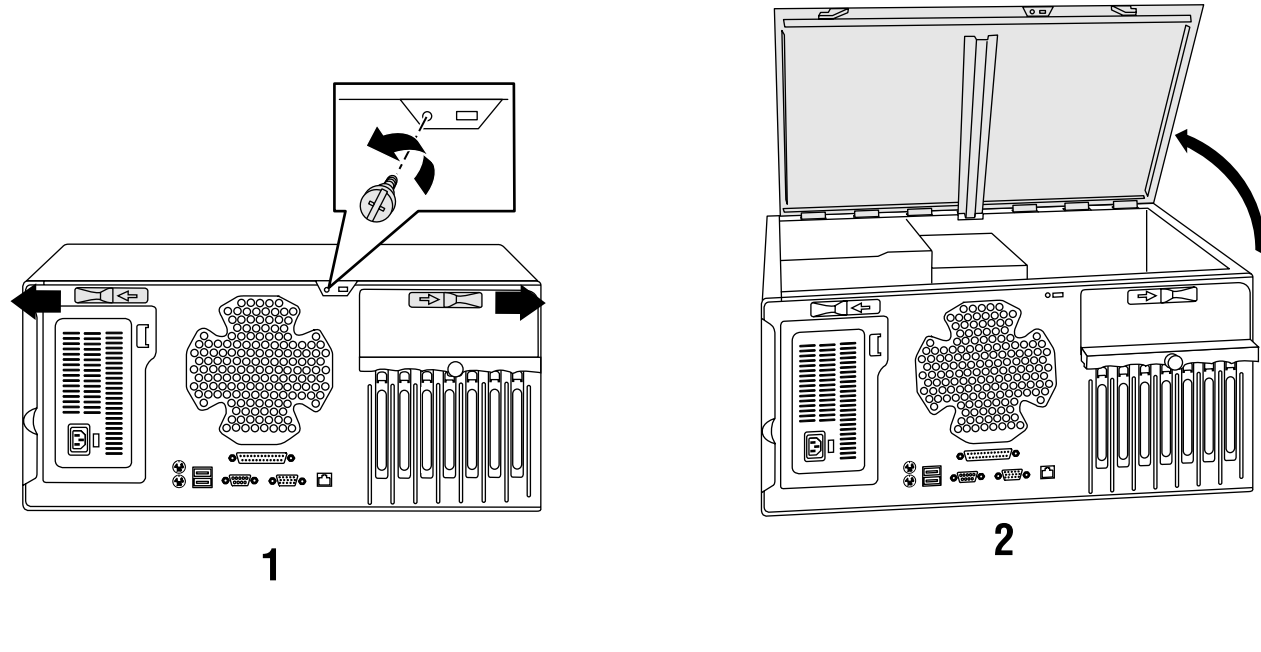
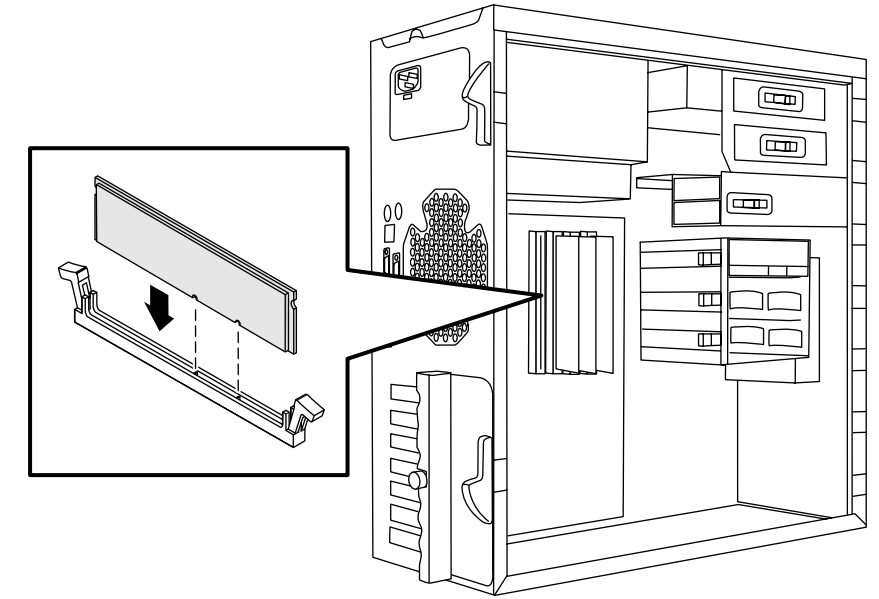


## Opening Your Server

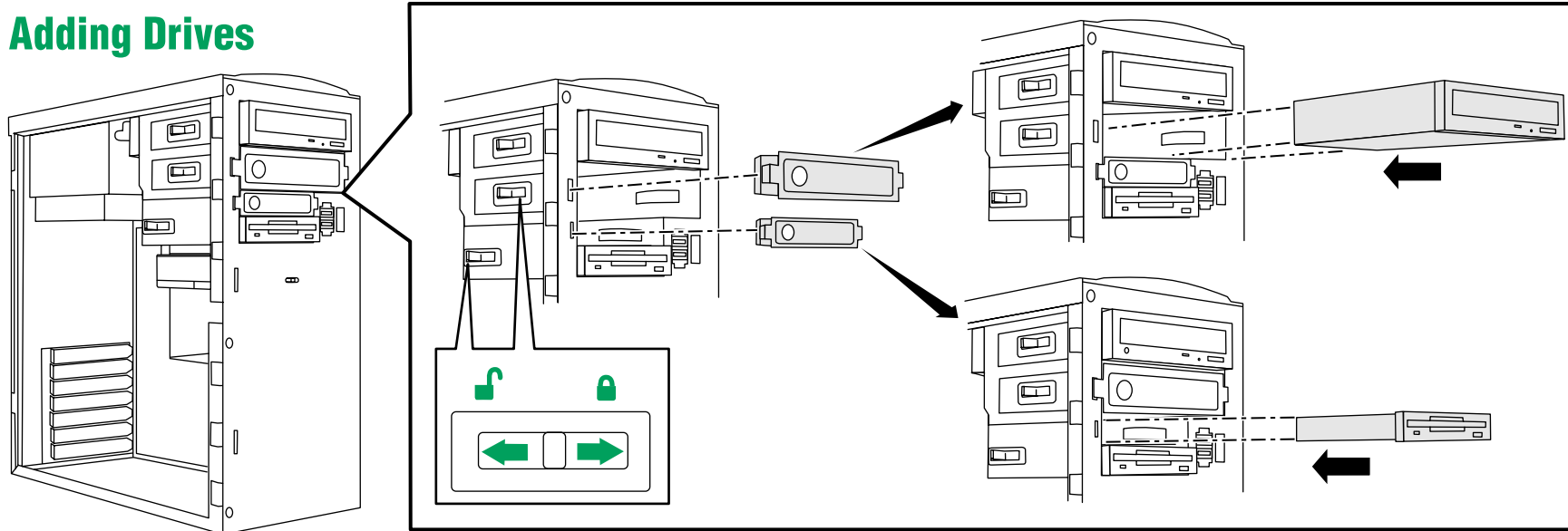


**Static Electricity Precautions**  
 1. Wear a grounding strap (available at most electronics stores)  
 2. Turn off the server power  
 3. Unplug all power cords from AC outlets

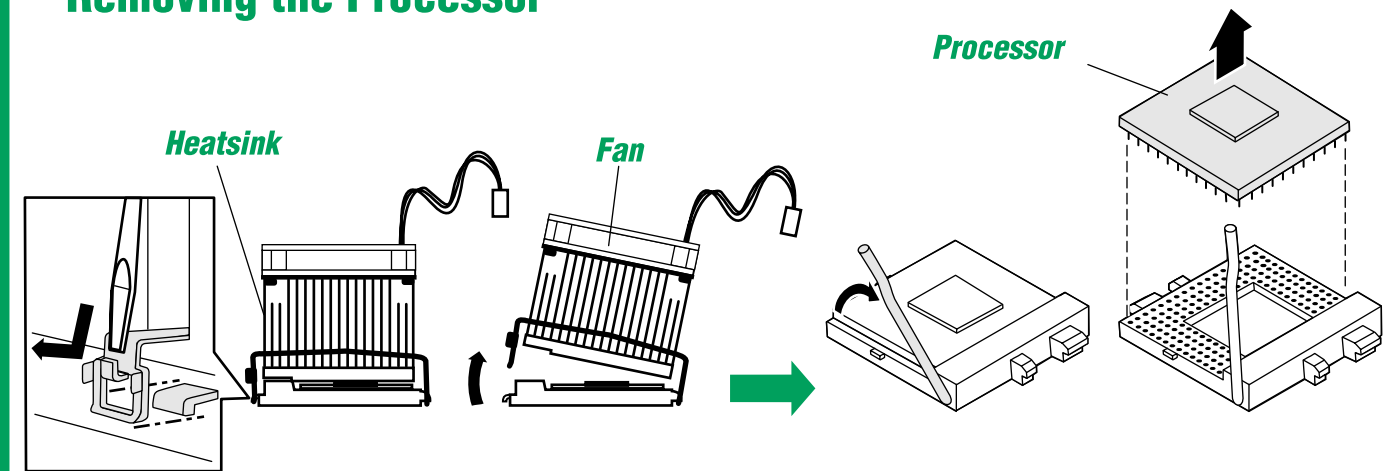
## Adding Memory



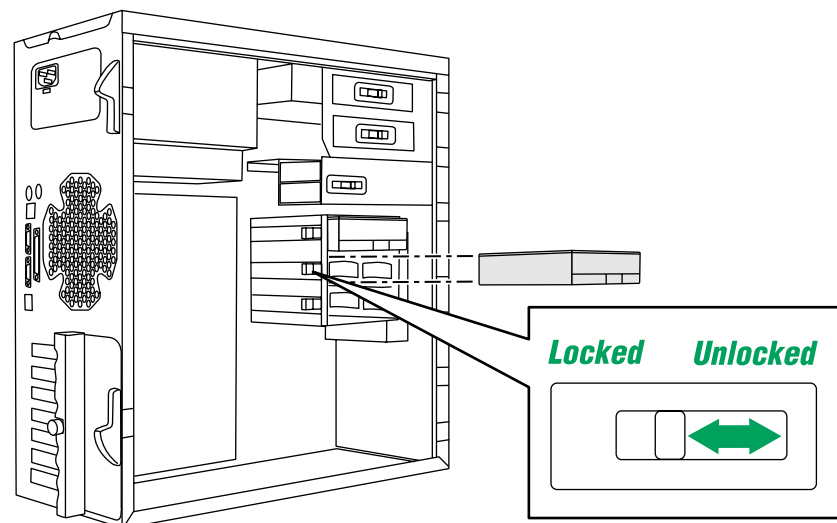
## Adding Drives



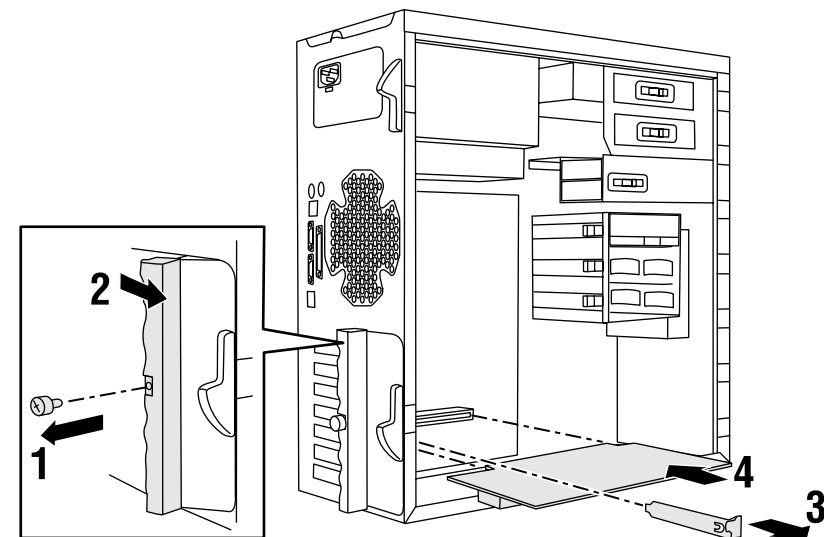
## Removing the Processor



## Removing or Adding a Hard Drive



## Installing an Expansion Card



## Additional Information Sources



Server Companion CD

- Hardware drivers and utilities
- System manual and component documentation
- Manageability solution software and documentation

[www.gatewayatwork.com](http://www.gatewayatwork.com)

- Product manuals and technical documentation
- Technical tips, support programs, and FAQs
- Driver library
- Technical training programs
- Assisted Service programs

A MAN US SP 500 SETUP POSTER R0 6/01



8507915